



SPECIALIST PANELS UK LTD

Data sheet 7

Face Materials

Steel Options

The steel facings used have a class 'o' rating under Building Regulations, based on them achieving the following :-

to BS 476: Part 6 (Fire Propagation)
index "I" below 12
sub index "i₁" below 6

and to BS 476: Part 7
(Surface Spread of Flame)
class "1" rating

Isowall™ 

Substrate

All of the following finishes with the exception of St St, have a substrate of hot dipped galvanised coated steel giving excellent corrosion resistance. Steel facings are generally available in 0.5, 0.55, 0.6 and 0.7mm thicknesses.

NB: All Rockwool panels have a protective strippable film to white faces.

Anti Static White Food safePVC Laminate

Generally a 120 micron thick coating of PVC film. Finish is chemically inert, stain and mould resistant, suitable for continuous contact with foodstuffs. Colours other than white may be available on request.

Grey Primer

A 10 micron grey epoxy finish used predominantly for unseen surfaces. Can be over painted or bonded with appropriate adhesives.

Colour Coat PVF2

A 27 micron stoved fluorocarbon coating giving good chemical and solvent resistance in addition to weather and corrosion.

Colour Coat HPS200

A 200 micron solid PVC coating generally utilised in external applications including roofs. Excellent weather resistant characteristics including tolerance of heat and UV light.

Textured Polyester

A 25 micron, 2 coat polyester coating giving a hard wearing textured finish generally suited to clean and cold room construction. Although food safe this finish is not recommended for prolonged contact with moist or wet

Architectural Polyester

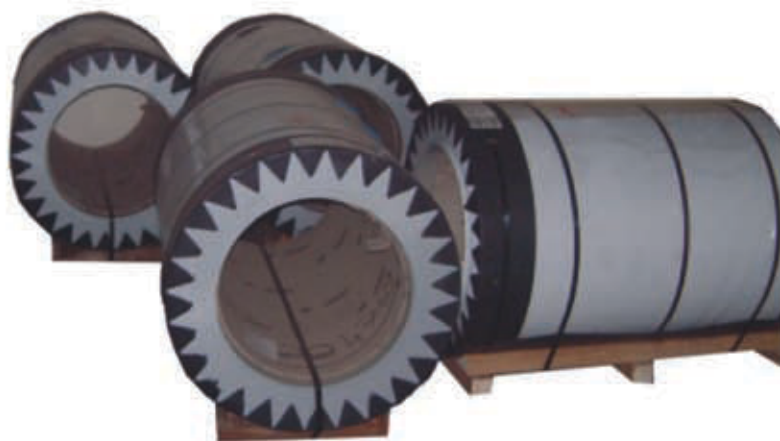
A 25 micron coloured paint finish, generally for low tech applications.

Stainless Steel

0.5mm thick, grade 304 dull polished to 150 grit finished.

Property	Test Specification	White Foodsafe PVC Laminate	Colourcoat HP200	Colourcoat PvI2	Textured Polyester	Grey Primer
Nominal organic coating Thickness	ECCAT1 BS 3900/C5	120µm	200µm	27µm	25µm	10µm
Specular gloss (60°)	ECCAT2 ASTM D523	12%	10-20% (varies/finish only)	20-35%	15%	10-40%
Pencil hardness	ECCAT4 ASTM D3363	N/A	N/A	F-H	2H	F-H
Scratch resistance	BS 3900/E2	>3500g	>3500g	3000g	>3000g	2100g
Abrasion resistance (Taber) <small>100 cc 20 rev. 100 cycles 20 ft wheel</small>	ASTM D4060	12-15mg	10-12mg	16mg	35mg	30mg
Flexibility: Reverse impact	ECCAT5 ASTM D2794	18J	18J	11J	5J	7J
Minimum bend diameter <small>(7x substrate thickness)</small>	ECCA T7	2T dia. (1T radius)	0T <small>(min bend dia. at 90°<2T)</small>	6T	4T dia. (2T radius)	5T dia. (2.5T radius)
Adhesion (Cross Hatch)	BS 3900/E6	N/A	100%	100%	100%	100%
Corrosion resistance: Salt spray	ECCAT8 ASTM B117-73	450h	1000h	1000h	250h	N/A
Humidity	BS 3900/F2	1000h	1000h	1000h	1000h	1000h
QUV weatherometer	ECCAT10 ASTM G53-84	N/A	2000 light hours	3000 light hours	N/A	N/A
Max. continuous operating temp.		50°C	60°C	120°C	120°C	100°C
Minimum temperature for forming		20°C	16°C <small>(min bend dia. at 90°<2T)</small>	16°C	16°C	16°C
Surface spread of flame	BS 476: Part 7	Class 1	Class 1	Class 1	Class 1	Class 1

All figures are typical and do not constitute a specification. Data is for the product on a Galvalume substrate



SPECIALIST PANELS UK LTD

Specialist Panels UK Ltd
Bolam Business Park
Bassington Industrial Estate
Cramlington
Northumberland
NE23 8AD

Tel: 01670 739 116
Fax: 01670 732 955
Email: info@isowall.org.uk
www.isowall.org.uk